

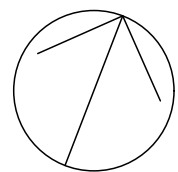
0 5 10 20 40MM  
scale for printing  
purposes only

JACQUES AVE

1 landscape plan  
1:100



Family & Community Services  
Land & Housing Corporation



6	22/05/19	Revised DA Issue
5	08/05/19	Revised DA Issue
4	05/11/18	Revised DA Issue
3	12/10/18	Revised DA Issue
2	24/08/18	DA Issue
Rev	Date	Notation/Amendment

do not scale drawings. check all dimensions on site.  
figural dimensions take precedence.

Project Architect:  
Hely Home Perry Architects P/L  
PH (02) 9807 5355 FAX (02) 9807 5365

Project Manager:  
Land & Housing Corporation  
PH (02) 8753 8000 FAX (02) 8753 8888

Civil & Structural Consultant:  
Michael Eli Consulting Engineers  
PH (02) 9807 5355 FAX (02) 9807 5365

Electrical, Mechanical and Hydraulic Consultant:  
ERBAS & Associates Pty Ltd  
PH (02) 9437 1022 FAX (02) 9437 1025

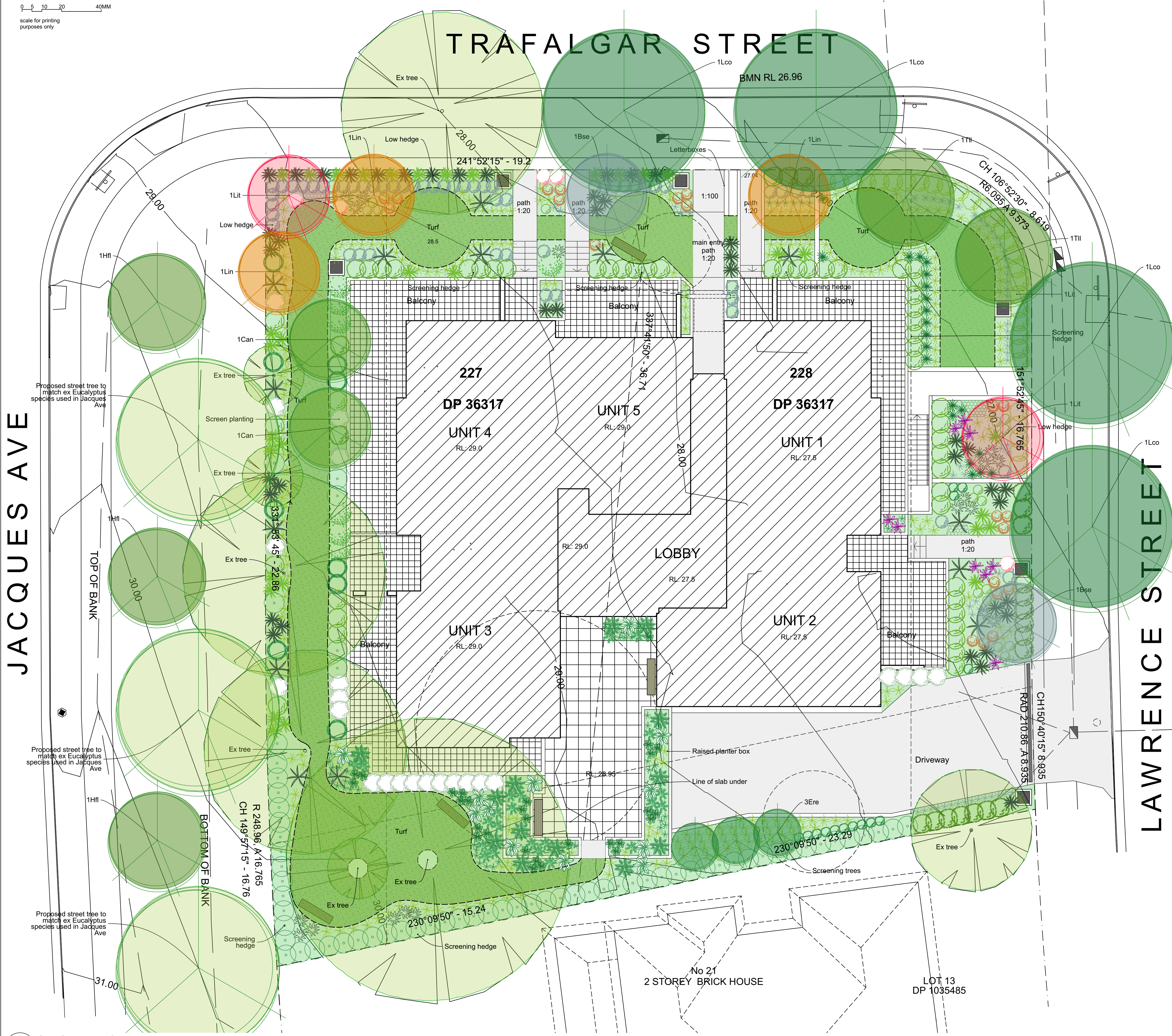
Landscape Consultant:  
**in view**  
www.inviewdesign.com.au  
INVIEW DESIGN PTY LTD  
ABN 74 118 922 973  
PO BOX 452, WYLLA NSW 2055  
melissa.mcgregor  
m. 0418 811 55 58  
e. maddock@inviewdesign.com.au



Project:  
General Housing  
at  
77 - 79 Trafalgar Street, Peakhurst

Title:  
Landscape Plan  
File:  
77-79 Trafalgar Street, Peakhurst (DA4).pln

Status: DA Issue  
Date: 22/5/19  
Scale: 1:100  
Stage: DA  
Drawing: Sheet  
L01  
Job no: P031\_17  
Checked: BGRJ6  
Sheet Size: A1  
Rev: 1  
Project no: BGRJ6  
1 of 2  
6



legend

- ex trees
- new tree (evergreen)  
colour indicative of leaf colour
- new tree (deciduous)  
colour indicative of leaf or flower colour
- turf
- bench seat
- brick edging
- fencing  
for all fencing materials and types refer to the architects plans.

### plant schedule

code	botanical name	common name	mature height	pot size	stake
<b>Trees</b>					
Can	<i>Cupaniopsis anacardioides</i>	Tuckeroo	8.0m	75L	yes
Bse	<i>Banksia serrata</i>	Old Man Banksia	6.0m	75L	yes
Ere	<i>Elaeocarpus reticulatus</i> 'Prima Donna'	Blueberry Ash	8.0m	75L	yes
Hfl	<i>Hymenosporum flavum</i>	Native Frangipani	5.0m	75L	yes
Lco	<i>Lophostemon confertus</i>	Brush box	10.0m	75L	yes
Lin	<i>Lagerstroemia indica</i> 'Natchez'	Crepe Myrtle	8.0m	75L	yes
Lit	<i>Lagerstroemia indica</i> 'Tuscarora'	Crepe Myrtle	6.0m	75L	yes
Til	<i>Tristania laurina</i> 'Luscious'	Water Gum	15.0m	75L	yes

<b>Shrubs</b>					
Bbc	<i>Banksia</i> 'Birthday Candles'	Birthday Candles	0.4m	200mm	no
Bvn	<i>Baeckea virgata</i> 'nana'	Dwarf Baeckea	0.5m	200mm	no
Cal	<i>Correa alba</i>	White Correa	1.5m	200mm	no
Cbj	<i>Callistemon</i> 'Better John'	Bottlebrush	1.0m	200mm	no
Ccc	<i>Callistemon</i> 'Captain Cook'	Bottlebrush	2.0m	200mm	yes
Cgb	<i>Callistemon</i> 'Great Balls of Fire'	Bottlebrush	1.5m	200mm	yes
Crg	<i>Crocea saligna</i> 'Rosy Glow'	Crocea	0.8m	200mm	no
Cwa	<i>Callistemon</i> 'White Anzac'	Bottlebrush	1.5m	200mm	yes
Sre	<i>Syzygium</i> 'Resilience'	Lilly Pilly	3.5m	200mm	yes
Rop	<i>Raphiolepis indica</i> 'Oriental Pearl'	Indian Hawthorne	1.0m	200mm	no
Wab	<i>Westringia</i> 'Aussie Box'	Coastal Rosemary	0.7m	200mm	no

<b>Groundcovers, Grasses and Feature Plants</b>					
Aau	<i>Asplenium australasicum</i>	Birds Nest Fern	1.0m	200mm	no
Ael	<i>Aspidistra elata</i>	Cast Iron Plant	0.8m	200mm	no
Arv	<i>Anigozanthus</i> 'Gold Velvet'	Kangaroo Paw	1.0m	200mm	no
Arv	<i>Anigozanthus</i> 'Ruby Velvet'	Kangaroo Paw	1.0m	200mm	no
Bca	<i>Blechnum cartilagineum</i>	Gristle Fern	0.7m	140mm	no
Das	<i>Doodia aspera</i>	Rasp Fern	0.5m	140mm	no
Dex	<i>Doryanthes excelsa</i>	Gymea Lily	1.2m	140mm	no
Dij	<i>Dianella</i> 'Little Jess'	Turf Lily	0.4m	140mm	no
Dgr	<i>Diets grandiflora</i>	Diets	0.7m	140mm	no
Fno	<i>Ficinia nodosa</i>	Knobby Club Rush	0.7m	140mm	no
Gaz	<i>Gazania</i> 'Yellow'	Gazania	0.2m	140mm	no
Gmt	<i>Grevillea</i> 'Mt Tamboritha'	Grevillea	0.3m	140mm	no
Lta	<i>Lomandra longifolia</i> 'Tanika'	Dwarf Mat Rush	0.5m	140mm	no
Pbb	<i>Phormium tenax</i> 'Bronze Baby'	NZ FLax	0.8m	200mm	no
Pla	<i>Poa labillardieri</i> 'Kingsdale'	Blue Tussock Grass	0.4m	150mm	no
Tas	<i>Trachelospermum asiaticum</i> 'Flat Mat'	Tricolour Jasmine	0.3m	150mm	no



